

**NZAR ID 368 ARM TYPE: Cutlass. Draft date (V1) 14 Nov 2015, Compiled by Dr John Osborne** MG DTT PhD FSG,

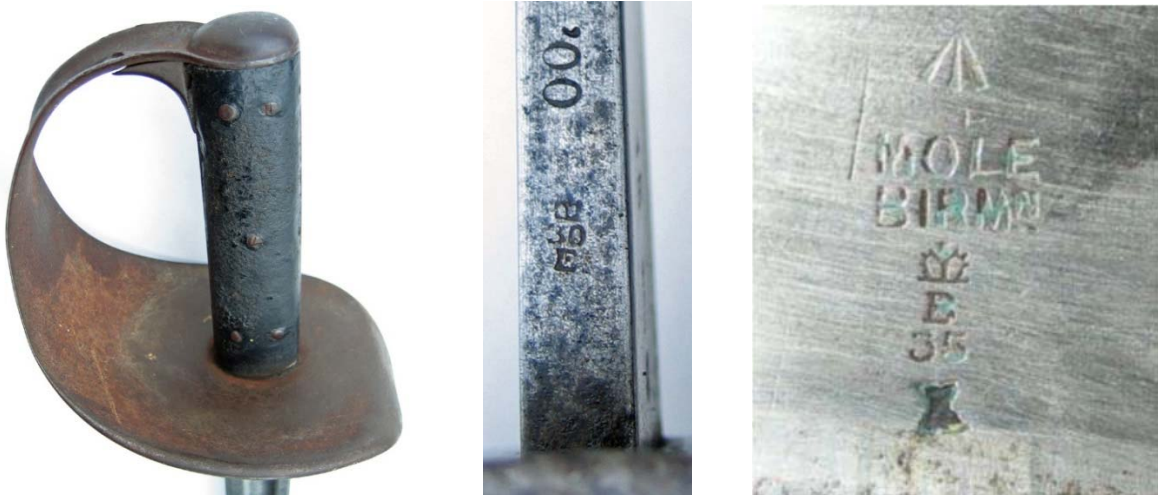
**Pattern: British and NZ P1900 Naval cutlass. Introduced: NZ 1900? Withdrawn: 1960s?**

**Specifications;** Maker: Enfield (EFD) and Mole. Blade: straight with single Fuller, 1.25" wide at hilt, 28" long double-edged at spear point. Hilt: sheet steel half bowl rolled over at outer edge, pierced through the top bar for the sword knot / wrist thong. Grip: Two piece checkered black leather riveted to tang. Scabbard: Black leather with steel fittings. (Note) cutlass were normally stored in racks and issued without scabbards to boarding parties, scabbards were issued to sailors on shore duties.



EFD makers, & proof / WD acceptance marks

'00 = 1900 year of manufacture



Another P1900 cutlass made by Mole

**New Zealand Service:** With the outbreak of WWI hundreds of New Zealanders joined the Royal Navy by transferring from NZ or by direct RN enlistment. The NZ Naval Defence Act 1913 formally established the New Zealand Naval Forces. The Pattern 1900 cutlass was removed from active service at the end of WWII but continued to be used for ceremonial duties into the 1960s. Used by NZ sailors serving on British and NZ naval warships.

**Acknowledgements** and special thanks to: Phil Cregeen FSG. Royal New Zealand Navy Museum Michael Wynd. Osborne Arms Museum. New Zealand National Archives. National Archives UK. HMS Victory Museum UK. **1930 Cutlass Drill - YouTube** [www.youtube.com/watch?v=JCF\\_DFRND9I](http://www.youtube.com/watch?v=JCF_DFRND9I)