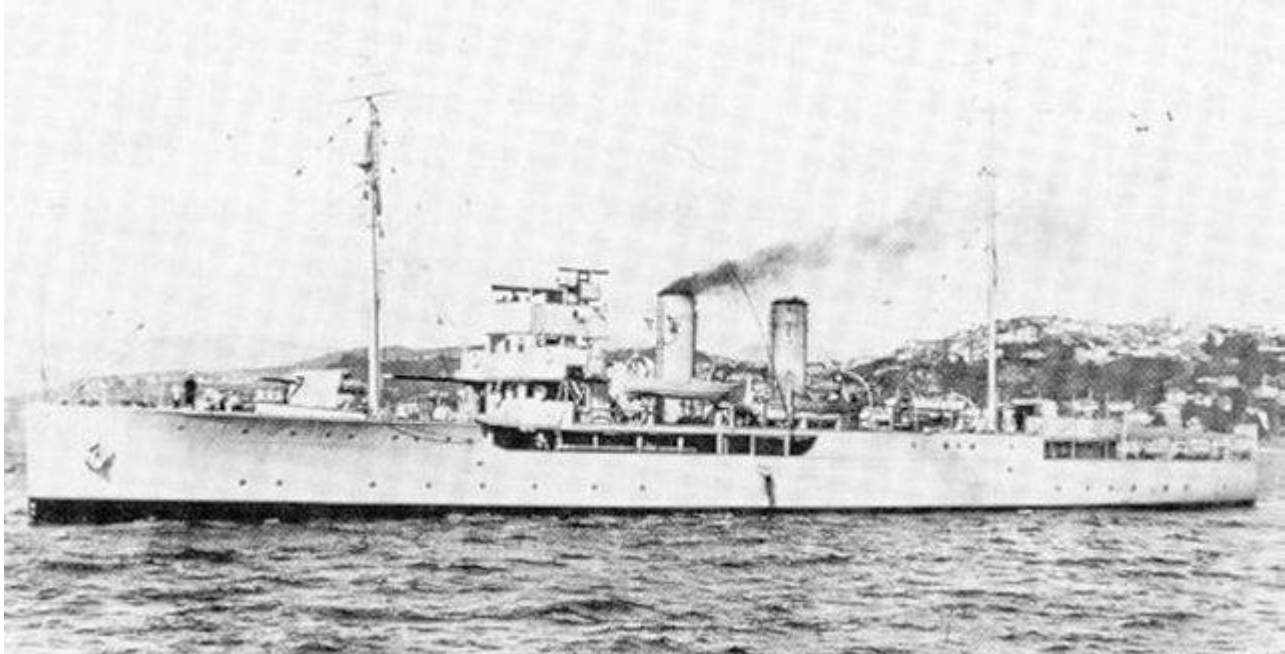


Pattern: HMS Veronica & Laburnum, Flower Class Sloop; Introduced in to NZ Service: 1920; Withdrawn: 1935
Veronica Builder: Dunlop Bremner & Co Port Glasgow; Launched: 27/5/1915; completed 8/15.
Laburnum Builder: Charles Connell & Co, Scotstoun Glasgow; Launched 10/6/15; completed 8/15.
Tonnage: 1200; Dimensions: 262.5 x 250 x 33 x 12 ft (80 x 76.2 x 10.1 x 3.6 m).
Machinery: 1 shaft, coal fired steam triple expansion, 1800 ihp; Speed: 16.5 knots.
Armament: Guns – 2 x 4 in, 4 x 3 Pdr, 2 x 2 Pdrs, MGs; Complement: 104.



HMS Laburnum

NZ Service

Built as fleet minesweepers by commercial yards in about six months in 1915 they were part of a class of 110 ships. Both Veronica and Laburnum were RN ships attached to the NZ station and operated as part of the NZ Division, taking part in exercises and annual cruises to the Pacific. Veronica arrived at Auckland in September 1920 and departed in February 1934, returning to the UK where she was sold. Laburnum arrived in March 1922 and departed in February 1935 for Singapore where she became a training ship and was scuttled on the fall of Singapore in 1942.

Veronica had just berthed at Port Ahuriri, Napier when the earthquake struck on 3/2/31 and was instrumental in sending radio messages to Auckland to summon assistance.

Acknowledgements: New Zealand Naval Vessels by RJ McDougall.

<http://www.reocities.com/rnznhistory/nzpart2/laburnum.jpg>